

Clinical Trial Centers AllianceSM

An alliance of quality research services

Bobbie Theodore, M.S.

Executive Director

bobbie@alliancesites.com

www.alliancesites.com

Table of Contents

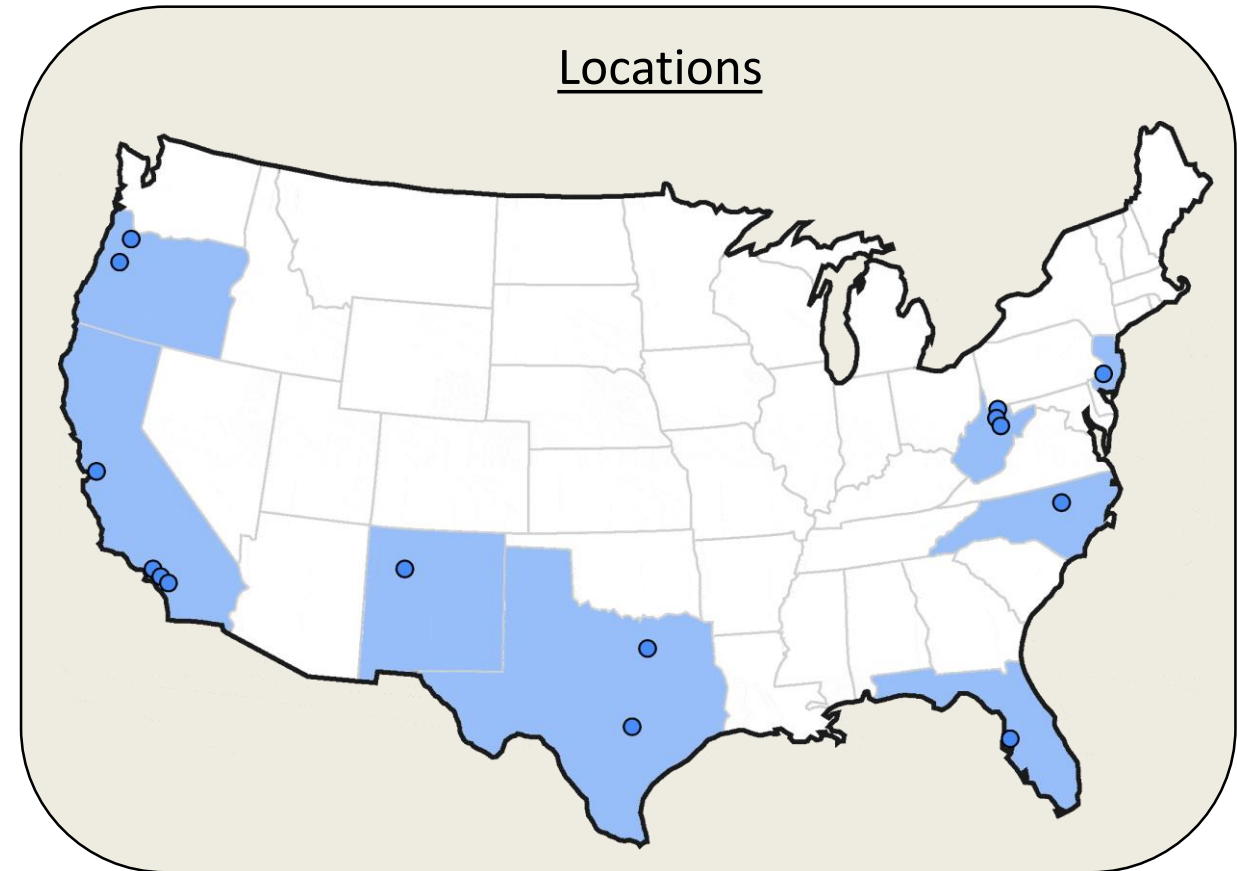
About Us
Sponsor Relations Team
Advantages & Expertise
Therapeutic Areas
Clinical Research Sites
Recruitment & Retention
Site Staff Highlights
Specialized Capabilities & Experience
Early Phase Research KOLs
Clinical Research Services
Curricula Vitae
Contact

About Us

Clinical Trial Centers Alliance is a unique group of independently owned and operated specialty research clinics and service providers located throughout the US.

Linked by the desire to foster mutual growth and quality in the clinical trials we conduct, Alliance members exchange best practices and expertise in various therapeutic areas, and share a business development and sponsor relations team.

We offer Phase I-IV trial design, conduct, and management. Alliance sites and service providers have steered and conducted more than 5,000 phase I-IV clinical trials across more than 25 therapeutic specialties since 2000.



Sponsor Relations Team

Dedicated to establishing and maintaining positive relationships with sponsors and CROs, our experienced sponsor relations team coordinates the site selection process (CDAs, feasibility questionnaires, etc.) and leads efforts to garner new study opportunities.

With a responsive and knowledgeable team managing the study site selection process, our sites are able to focus on their studies in progress. The expert site selection coordination we offer is advantageous for not only our sites, but also sponsors and CROs.

We have worked with over 100 sponsors and CROs, including biotechs, startups, and big pharma.



Jeanette Caruso

Medical Division Director

Bobbie Theodore

Executive Director

Annie Speno

Operations Director

Advantages & Expertise

- **Single POC** for site and vendor services, protocol and budget consulting
- **Internationally-known KOLs** in early phase and complex trial design, cognition, driving simulation, neuroscience, regulatory and pricing strategies
- **Specialty capabilities** including qEEG/ERPs, PET, fMRI, digital therapies, CSF collection, cognitive and clinical assessments
- History of **successful recruitment and retention**
- **Sponsor relations team** dedicated to rapid response and meeting sponsor/CRO needs
- **Central IRB** of sponsor's choice; Dedicated regulatory, and budget and contract staff for **quick turnaround**
- Streamlined solution to meet **CRO + site deliverables under one contract** (when advantageous for sponsors)

Therapeutic Areas

Central Nervous System

Psychiatry

- ADHD
- Anxiety
- Autism
- Bipolar
- Depression
- Schizophrenia

Neurology

- Alzheimer's
- Cognition
- Multiple Sclerosis
- Parkinson's
- Post-stroke, movement disorders

Addictions

- Abuse liability (HAL)
- Alcohol dependence
- Binge eating
- Drug
- Opioid
- Smoking cessation

Sleep

- Insomnia
- Maintenance
- Narcolepsy
- Restless legs syndrome (RLS)
- Shift worker
- Sleep apnea

Pain

- Acute and chronic
- Fibromyalgia
- Migraine
- Neuropathic pain
- Osteoarthritis
- Post-surgical pain

Therapeutic Areas

General Medical

Cardiovascular

Dermatology

Endocrinology

Gastrointestinal

Hypercholesterolemia

Immunology

Infectious diseases

Metabolic disorders

NASH/NAFLD

Obesity

Ophthalmology

Renal/hepatic impairment

Respiratory

Urology

Vaccines

Women's health

Other Populations

Asian bridging

Healthy and healthy elderly

Rare/orphan diseases

Clinical Research Sites



[Collaborative Neuroscience Network](#)

Torrance, Garden Grove, Long Beach, CA

[Clinical Pharmacology Unit](#)

Long Beach, CA



[Pacific Research Partners](#)

Oakland, CA



[Hassman Research Institute](#)

Berlin, NJ

[Early Phase Unit](#)



[Albuquerque Neuroscience, Inc.](#)

Albuquerque, NM



[FutureSearch Trials of Neurology and](#)

[Sleep Medicine](#)

Austin, TX

[FutureSearch Trials of Dallas](#)

Dallas, TX



[Oregon Center for Clinical](#)

[Investigations, Inc.](#)

Portland & Salem, OR

Recruitment



- Full-time dedicated recruitment and outreach specialists on staff
- Large, diverse patient databases
- Affiliated private and group practices
- Established relationships with physician networks for patient referrals
- Relationships with residential facilities, board & cares, senior and Japanese communities
- Participation in community events and support groups
- History of successful advertising
- Ability to pre-qualify patients via IRB-approved pre-screen consent form

Retention



- Modern inpatient facilities, some with private and semi-private rooms for caregivers
- Site-provided patient transportation
- Regular communication with patient, family, and caregiver
- Thorough pre-screening
- Treating physicians allow for ease in transition and follow-up

Site Staff Highlights

- Investigators and KOLs boarded in psychiatry, neurology, sleep medicine, internal medicine, addictions, and more.
- Protocol consultants to sponsors and CROs, and experts in psychiatry, cognition, neurology, addictions, and phase I study designs
- Full-time certified, psychometric clinical raters (doctorate and M.A.-level with up to 20+ years rating experience)
- Multiple full-time study coordinators including CCRCs, RNs, and LVNs
- Dedicated recruitment and outreach specialists with established referral networks
- Regulatory, QA, training, and IT personnel

Specialized Capabilities & Experience

- State-of-the-art Early Phase Units
- CNS Biomarkers:
 - EEG and qEEG with evoked potentials
 - [Imaging](#), 1.5 and 3T MRI, PET and fMRI
 - Lumbar puncture and CSF collection
 - Ocular Assessments
 - Psychomotor Testing
- [Human Abuse Liability](#) and Hepatic & Renal Impairment Units
- 24 hour monitoring – cardiac and PSG (polysomnography)
- Serial PK and ECG
- Compounding drug
- Infusion, injection, oral, sublingual, device, implant, and transdermal patch delivery systems
- Software / Neurogaming Product Validation
- [Driving simulation](#)



Early Phase Research KOLs

The [Alliance Early Phase](#) (AEP) division combines thought-leader expertise in conducting complex Phase 0-2a trials across a range of patient and healthy populations.

Led by Drs. Larry Ereshefsky, David Walling, and Howard Hassman, with support from the Alliance team, AEP PIs have conducted over 500 early phase trials in CNS, medical, Asian bridging, and HNV populations.

We provide single- and two-site solutions for efficient study conduct to ensure a harmonized approach to the clinical and scientific aspects of any trial.



Larry Ereshefsky, Pharm.D.

CSO, Early Phase Development

Collaborative Neuroscience
Network and Hassman Research
Institute

David Walling, Ph.D.

CEO/Principal Investigator

Collaborative Neuroscience
Network

Howard Hassman, D.O.

CSO/Principal Investigator

Hassman Research Institute

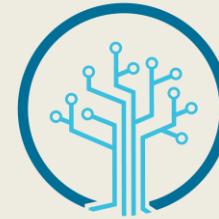
Clinical Research Services

Our Alliance includes complementary services to provide full solutions to run clinical programs:

*Cognitive
Research
Corporation*

[Cognitive Research Corporation](#)

Driving study solutions and more



VeraSci

VeraSci

Clinical assessments and trial services such as rater training, data management, consulting, and language services

Curricula Vitae

Collaborative Neuroscience Network, LLC.

- [David P. Walling, Ph.D.](#)
- [Armen K. Goenjian, M.D.](#)
- [Lara Shirikjian, D.O.](#)
- [Omid Omidvar, M.D.](#)
- [Nirav S. Patel, M.D.](#)
- [Steven Reynolds, D.O.](#)
- [Mark Leibowitz, M.D.](#)

Pacific Research Partners, LLC.

- [Ira D. Glick, M.D.](#)
- [Anand Mehta, M.D.](#)
- [Corinna Gamez, M.D.](#)

Hassman Research Institute, LLC.

- [Howard Hassman, D.O.](#)
- [Michael Hassman, D.O.](#)
- [Roberta Ball, D.O.](#)
- [Elan Cohen, Ph.D.](#)
- [Larry Shusterman, D.O.](#)
- [Elissa Hassman, D.O.](#)

Alliance Early Phase CSO

- [Larry Ereshefsky, Pharm.D.](#)

FutureSearch Trials, L.P.

- [John Douglas Hudson, M.D.](#)
- [Edward Ortiz, M.D.](#)
- [Michael Downing, M.D.](#)

Oregon Center for Clinical Investigations, Inc.

- [Beal Essink, M.D.](#)
- [Drissana Tran, M.D.](#)

Albuquerque Neuroscience, Inc.

- [Glenn Michael Dempsey, M.D.](#)
- [Paula Lane, M.D.](#)

Cognitive Research Corporation

- [Gary G. Kay, Ph.D.](#)
- [Thomas Hochadel, Pharm.D.](#)

NeuroCog Trials, Inc.

- [Richard Keefe, Ph.D.](#)

Contact

Bobbie Theodore, M.S.

(916) 939-6696

bobbie@alliancesites.com