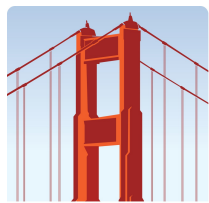


# Clinical Trial Centers Alliance<sup>SM</sup>

■ ■ an alliance of quality research services ■ [www.alliancesites.com](http://www.alliancesites.com)



## PACIFIC RESEARCH PARTNERS

Pacific Research Partners (PRP), a division of Collaborative Neuroscience Network, is a leading clinical research center in the San Francisco Bay Area. Founded in 2010, PRP is focused on providing high quality care while ensuring the integrity of the data collected and adhering to enrollment timelines.

### RECRUITMENT & RETENTION

PRP consistently meets enrollment goals, and has been a top-tier enroller on a majority of studies conducted. Recruitment and retention is enhanced by:

- Full-time recruitment and outreach professionals
- Partnerships with community resources and a vast physician referral network of over 600 dedicated health professionals.
- Convenient location with easy access to BART and other public transportation

### INVESTIGATORS



**Ira Glick, M.D.**

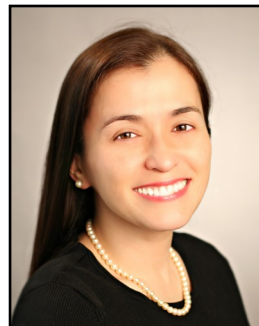
Medical Director and  
Principal Investigator

Board Certified in  
Psychiatry



**Anand Mehta, M.D.**

Principal Investigator  
Double Board Certified  
in Internal Medicine  
and Endocrinology



**Corinna Gamez, M.D.**

Principal Investigator  
Board Certified in  
Psychiatry

### INDICATIONS

**Addictions:** Alcohol, Binge Eating, Drug, Smoking

**Medical:** Endocrinology, Metabolic Disorders, Dermatology, Respiratory, Immunology, Gastrointestinal

**Neurology:** Alzheimer's, Post Stroke, Parkinson's, Cognitive Disorders, Multiple Sclerosis

**Pain:** Acute/Chronic, Fibromyalgia, Migraine, Neuropathic, Osteoarthritis

**Psychiatry:** ADHD, Mood Disorders, Schizophrenia, Bipolar

**Sleep:** Insomnia, Narcolepsy, RLS

**Healthy (SAD/MAD, FIH)**

**Device and Product Validation**

### FEATURES & CAPABILITIES

- Central IRB
- Refrigerated & ambient centrifuges
- Secure on-site laboratory with all lab staff IATA certified
- Dedicated and secure temperature controlled medication facility with triple locked capabilities
- -70°F freezer with temperature monitoring
- rTMS machine
- Rapid start-up with regulatory and budget/contract turnaround within 2 weeks

### LOCATION

901 Clay Street, Oakland, CA 94607

#### CONTACT:

[www.pacifictrials.com](http://www.pacifictrials.com)

[www.alliancesites.com](http://www.alliancesites.com)

[clinicaltrials@alliancesites.com](mailto:clinicaltrials@alliancesites.com)

Alliance Office: (916) 939-6696

Alliance Cell: (916) 803-7149